



14 F
LORRA
L. ST

COVENT
GARDEN
OFFICE

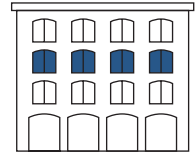
W C
E O
L M
E

SHORT OR LONG TERM, 2 DESKS OR 200, AS YOUR BUSINESS AND TEAM GROWS WE HAVE THE FLEXIBILITY WITHIN OUR PORTFOLIO TO CHANGE WITH YOU.

Welcome to Covent Garden Offices from Capco – a collection of versatile bespoke offices in an unbeatable central London location. Known the world over for its iconic Royal Opera House and Piazza, world-class shops and restaurants, and charming cobbled streets and open spaces, Covent Garden provides the ultimate arrival experience for you and your clients.

When you move into one of our workspaces, you can expect more than just a great location. As custodians of Covent Garden, we pride ourselves on knowing our customers as well as we know our buildings. We'll look after your needs from day one, with on-call maintenance, 24-hour security and concierge services, and all the advantages of belonging to our estate-wide community of businesses.

And when your business grows or changes, we'll help you adapt your space or find you a new one within our extensive portfolio.



14 FLORAL STREET

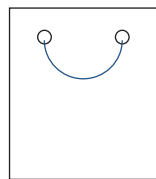
- Introduction
- 02 Floral Street
- 04 Reception
- 06 Floor 02
- 20 Specifications
- 22 Floorplan
- 24 Connections
- 26 Location map
- 39 The Estate
- Contact



14 FLORAL STREET

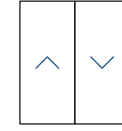


PICK OF THE BUNCH



One of Covent Garden's original retail hotspots, Floral Street is still home to high-end favourites like Paul Smith, Ganni, APC, Glossier and Kent and Curwen. Just steps away from Covent Garden tube and 10 minutes' walk from Crossrail at Tottenham Court Road, the second floor floorplate offers 2,593 sq ft of flexible high-spec accommodation.

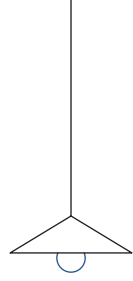
FRONT OF HOUSE



UP AND AWAY

The newly developed reception area has a dedicated front desk to greet your guests, and leads through to a passenger lift to take you to the floors above.





INSPIRED BY DESIGN

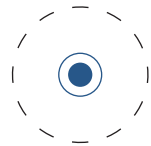
The second floor is fully fitted out and the interior designed to create something you'd be proud to show your clients. Contrasting materials and bold accents of colour create an inspiring space with a relaxed feel.



FLOOR
02

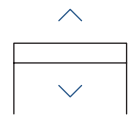


ALL RISE



IN THE ZONE

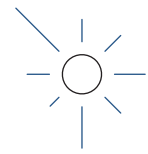
Flexible enough to suit any business, the floorplate is designed for zonal working to accommodate a range of different activities and working styles, including breakout spaces with comfortable seating.



FLEXIBLE WORKING

Fully adjustable desks that rise to standing height give you great flexibility and better health and wellbeing for all your employees.



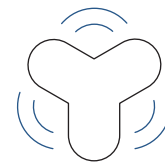


LET THERE BE LIGHT

Paned glass walls add an elegant touch to the main meeting room, continuing the bright and airy feel that characterises the workspace.

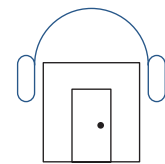


ALL OR NOTH - ING



AUDIENCE

Whether you're having a board meeting, a conference call, or you just need a quieter space to work in, you're guaranteed complete privacy in the fully soundproofed meeting room.



SILENCE

Perfect for private conversations with a colleague, the soundproof pods provide the perfect environment for a private conversation. They also help create a communal meeting area behind them.



KITCHEN CATCH-UP

With communal tables and plenty of natural light, the dining and amenity space is great for an informal get-together at lunchtime or even an impromptu workshop.



EAT IN

ON TAP



HOT OR COLD

The kitchen area is fitted with a boiling-water tap so there's no need to hang around waiting for the kettle to boil.

16
17





FRESHEN UP



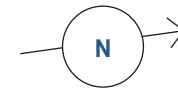
S P E
C I F
I C A
T I O
N S

- Ultrafast fibre optic broadband from G.Network
- Openable windows
- 8 person passenger lift
- WC and shower facilities with high quality finishes
- Daikin VRV4 3pipe heat recovery air conditioning system
- 75mm raised-access floor
- Fully data cabled (2nd floor only)
- Suspended LED lighting
- 12-hour manned reception
- SKA Gold sustainability rating
- Operating density is 1/8m²
- Floor to ceiling height of 2,985mm RAF to Slab

W I D E R
E S T A T E
B E N
E F F I
T S

- High standard of estate management and upkeep from Capco
- Air that's 17% cleaner than in Soho or Mayfair
- 24-hour estate-wide security and cleaning services
- Access to Capco's exclusive 24-hour concierge service
- Fibre optic broadband across the whole estate
- Access to dry-cleaning service
- Access to discount and rewards scheme
- Exclusive access to year-round Covent Garden Estate events programme
- Monthly bike-maintenance scheme
- Pedestrianised areas resulting in better air quality for a wider safer realm
- Commitment to plastic reduction and sustainability agenda
- World-class retail, restaurant and leisure on the door step with 7,000 hotel rooms, 40,000 theatre seats and over 40 bars and restaurants
- Covent Garden landmark location with heritage and history
- Walking distance from four tube stations and three mainline stations
- Fully accessible and DDA compliant

02

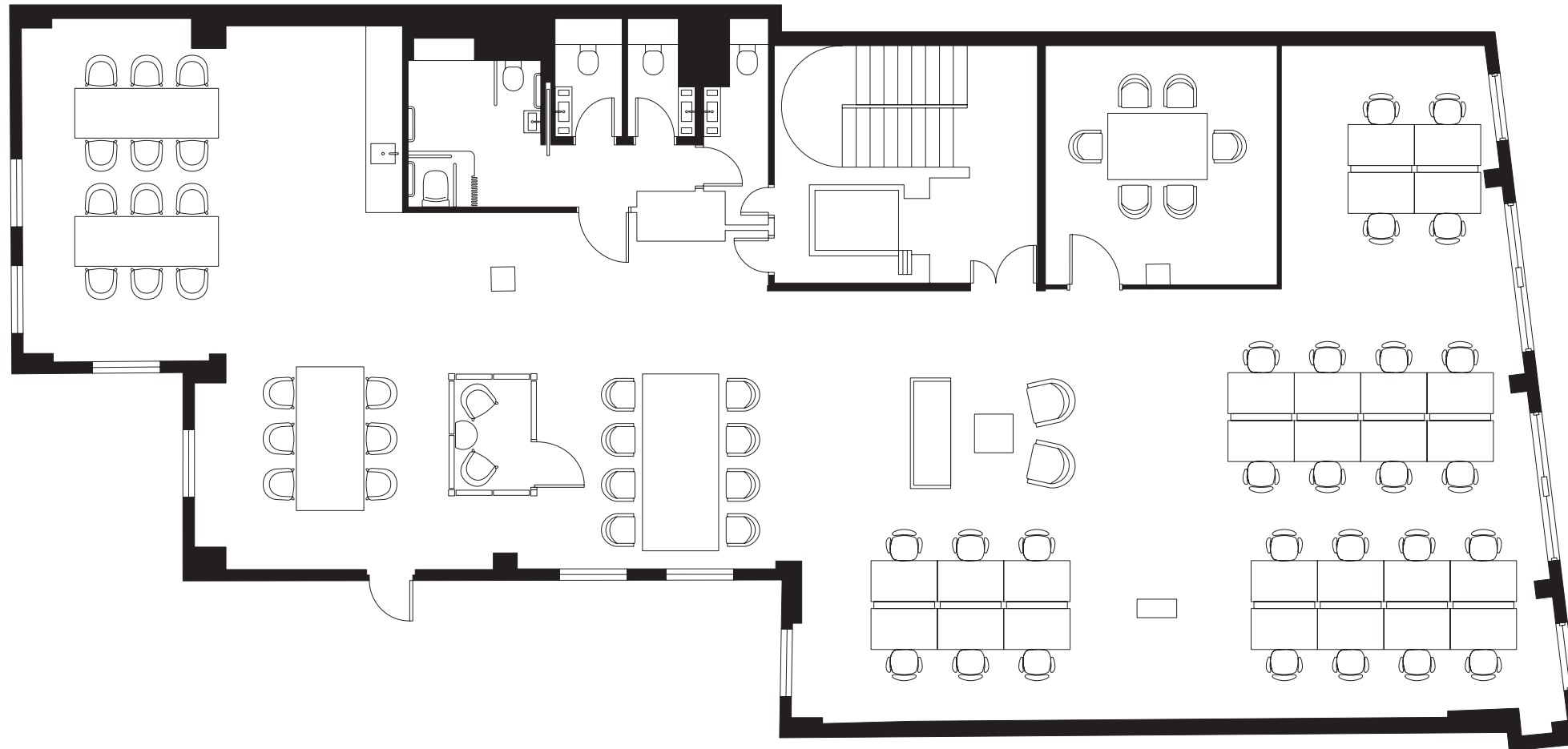


FURNISHED SECOND FLOOR

Floor 02 comes fully furnished with a thoughtfully designed layout to suit a range of businesses. The floor can be taken as unfurnished Category A space if you prefer.

INDICATIVE SPACE PLANNING

Work stations	26
Meeting rooms	1
Soundproof pod	1
Breakout kitchen	1
Breakout areas	2
Total area	2,593 sq ft 241.0 sq m



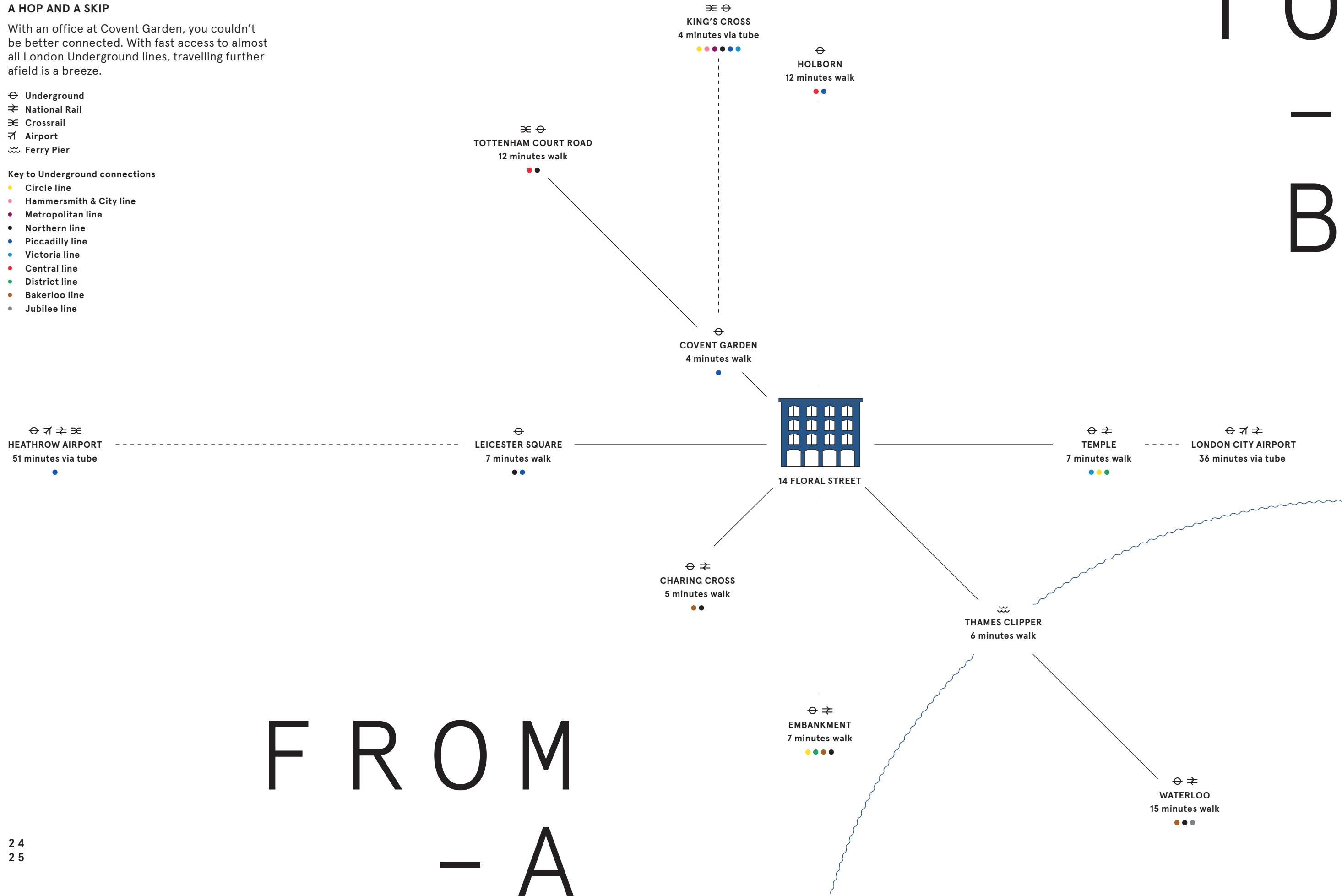
A HOP AND A SKIP

With an office at Covent Garden, you couldn't be better connected. With fast access to almost all London Underground lines, travelling further afield is a breeze.

- ⊖ Underground
- ≠ National Rail
- ≡ Crossrail
- ✈ Airport
- ⚓ Ferry Pier

Key to Underground connections

- Circle line
- Hammersmith & City line
- Metropolitan line
- Northern line
- Piccadilly line
- Victoria line
- Central line
- District line
- Bakerloo line
- Jubilee line



WORK & PLAY

- 14 FLORAL STREET
- RETAIL
- OFFICES
- FOOD & BEVERAGE
- PEDESTRIANISED ZONE
- OUTSIDE SEATING

OUR COVENT GARDEN ESTATE

Clean, well-maintained and with 24-hour security. With a workspace at Covent Garden Offices, you'll have access to everything you need right on your doorstep.



SHOPPING

- 01 APC
- 02 APPLE
- 03 BUCHERER
- 04 CHANEL
- 05 CHARLOTTE TILBURY
- 06 DIOR
- 07 GLOSSIER
- 08 JO MALONE
- 09 LINDA FARROW
- 10 MULBERRY
- 11 NARS
- 12 POLO RALPH LAUREN
- 13 TIFFANY
- 14 TOM FORD
- 15 GANNI

BANKS

- 16 NATWEST
- 17 HSBC

FITNESS

- 18 GYMBOX
- 19 JUBILEE HALL GYM
- 20 NUFFIELD HEALTH
- 21 PELOTON
- 22 PURE GYM

DINING

- 23 ABUELO
- 24 AUBAINE
- 25 AVOBAR
- 26 BALTHAZAR
- 27 BUNS & BUNS
- 28 CAFFÈ NERO
- 29 CORA PEARL
- 30 DIN TAI FUNG
- 31 DOMINIQUE ANSEL TREEHOUSE
- 32 FLAT IRON
- 33 FRANCO MANCA
- 34 FRENCHIE
- 35 COVENT GARDEN GRIND
- 36 LA GOCCIA
- 37 FLORAL BY LIMA
- 38 THE OYSTERMEN
- 39 PRÊT A MANGER
- 40 STARBUCKS
- 41 STICKS'N'SUSHI
- 42 SUSHISAMBA
- 43 THE IVY MARKET GRILL
- 44 THE PETERSHAM

All destinations shown off map are within a 3-4 minute walk.



VYTA

COMMUNITY

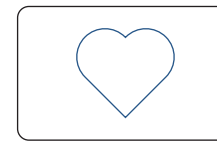
YOGA IN THE PIAZZA



BRITISH BEAUTY COUNCIL



ATELIER COLOGNE



I LOVE COVENT GARDEN

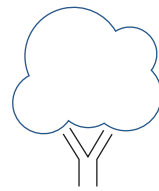
As an occupier at Covent Garden Offices, you and your team can sign up to the I Love Covent Garden scheme* for a card that gives you discounts and perks at selected shops, restaurants and bars across the estate. Indulge yourself with treats like free Quick Tricks mini makeovers at Charlotte Tilbury, complimentary samples from Atelier Cologne or 20% off services at Trevor Sorbie hair salon. Restaurants offering up to 20% off through the scheme include Abuelo, Covent Garden Grind, Fire & Stone, The Petersham and Busaba, and you can enjoy discounts at fashion stores including Kent & Curwen, Alkemistry, Ted Baker and Linda Farrow.

COVENT GARDEN LIFESTYLE

You'll also have access to our 24/7 concierge service, Covent Garden Lifestyle*. As a member you'll receive the weekly Covent Garden Life Magazine, inspiring you to explore the latest restaurant openings, sporting packages, exclusive offers and complimentary invitations, as well as community-wide public events. Contact our Lifestyle Manager for help with everything from restaurant reservations and tickets to sold-out shows, to innovative ideas for team-building days.

*Terms and conditions apply

BODY + MIND



A GREENER GARDEN

We're committed to keeping Covent Garden a green and clean place for everyone in our community to enjoy. Continuing our horticultural heritage, a dedicated team of gardeners tends to **MORE THAN 5,000 PLANTS ACROSS THE ESTATE**, creating beautiful displays and increasing biodiversity. We're helping to make a difference by following sustainable design principles, implementing 'no idling' zones and monitoring air quality. And we work closely with our occupiers to minimise our impact on the environment through measures like reducing plastic use.

HEALTH AND WELLBEING

For employers who prioritise wellbeing, Covent Garden is a great place to base your business. The many pedestrianised areas are beautifully maintained by our estate management, and reduced traffic means less noise, safer streets and **AIR THAT'S 17% CLEANER THAN IN SOHO OR MAYFAIR***. Fit in a lunchtime workout at one of the estate's many gyms, including Gymbox, Peloton, Jubilee Hall, Pure Gym and Nuffield Health. Or relax and enjoy some downtime on the green lawns of St Paul's church gardens, a delightful oasis for those in the know.

*According to LondonAir.org.uk, Covent Garden Piazza had annual mean NO2 air pollution of 46 microgrammes per m³ compared to 55 microgrammes for both Wardour Street in Soho and Grosvenor Square East in Mayfair in 2016.

D I - N I N G

ABUELO



THE IVY
MARKET GRILL



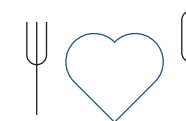
THE OYSTERMEN

DOMINIQUE ANSEL



SUSHISAMBA

CAFÉ CULTURE/HAUTE CUISINE



For coffee and a quick bite, pop into Prêt or Aubaine, or for a great-value lunch, check out ABUELO, Buns & Buns or Floral by Lima. SUSHISAMBA serves up an unforgettable high-end dining experience, combining a fusion of Brazilian, Peruvian and Japanese cuisine with spectacular interior design. For all day dining you have THE IVY MARKET GRILL right on your doorstep. For classic British seafood with an inventive twist, try THE OYSTERMEN on Henrietta Street, or the exciting new bakery and bistro concept from DOMINIQUE ANSEL on Floral Street.

CHRISTMAS LIGHTS



EVENTS

ST GERMAIN



COVENT GARDEN IN BLOOM



YOU'RE INVITED



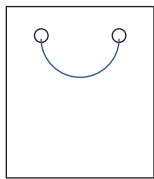
Our year-round events programme is the perfect opportunity to connect with colleagues and other businesses on the estate. In 2019 there were **30 EVENTS AND ACTIVITIES** over a total of 128 days. Every spring, **COVENT GARDEN IN BLOOM** hosts a week of floral-themed events and in-store experiences, while over the summer, a series of ever-changing pop-up bars from exciting brands like **ST GERMAIN** and Grey Goose serve drinks on the Piazza. London Beauty Week launched at Covent Garden in autumn 2019 with masterclasses, makeovers and giveaways, and in winter, the **CHRISTMAS LIGHTS** switch-on brings a festive atmosphere and a touch of celebrity magic.

SHOP - PING

BUCHERER



BAGS OF STYLE



Covent Garden is the go-to destination for luxury brands like APPLE. Experience high-octane glamour at the Dior and TOM FORD beauty stores, pick up some tips from the makeup-artists at Charlotte Tilbury, or discover a new signature scent at Chanel's Fragrance and Beauty Boutique. For fine Swiss watches it has to be BUCHERER, while jeweller Tiffany & Co. is the place to splash out on the perfect gift. Kit yourself out in style at POLO RALPH LAUREN, or browse the beautiful sunglasses at LINDA FARROW.



POLO RALPH LAUREN

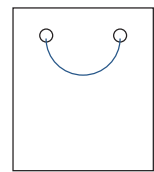
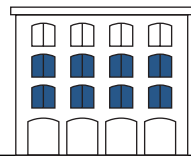
LINDA FARROW



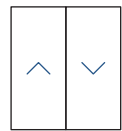
TOM FORD

APPLE

14 FLORAL STREET



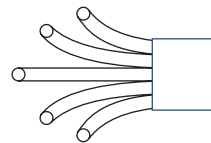
ORIGINAL SHOPS



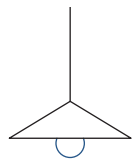
LIFT ACCESS



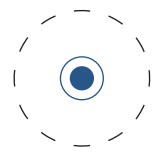
CATEGORY A



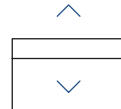
FIBRE READY



DESIGNER INTERIOR



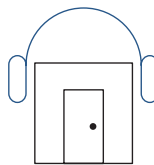
ZONAL WORKING



ADJUSTABLE DESKS



CONFERENCING



SOUND PROOFING



KITCHEN AREA



BOILER TAP



SHOWERS

SHORT OR LONG TERM, 2 DESKS OR 200, AS YOUR BUSINESS AND TEAM GROWS WE HAVE THE FLEXIBILITY WITHIN OUR PORTFOLIO TO CHANGE WITH YOU.



COVENT GARDEN OFFICE

CBRE

Adam Cosgrove:
Adam.Cosgrove@cbre.com
+44 20 7182 2447

Joe Gibbon:
Joe.Gibbon@cbre.com
+44 20 3257 6173

FAREBROTHER

Matt Causer:
mcauser@farebrother.com
+44 20 7855 3530

Ben Fisher:
bfisher@farebrother.com
+44 20 7855 3584

DISCLAIMER

The above information is believed to be correct but is intended for guidance only and its accuracy is not guaranteed. It does not constitute an offer and must not be relied on as representation of facts or as otherwise forming the basis of a contract. The vendors, lessees and neither Covent Garden London, their letting agents nor their employees have any authority to make or give away any representation or warranty in relation to the property.



COVENT
GARDEN
OFFICE